



MONTHLY MEMBERSHIP PROGRESS REPORT

District 23 C

Results as of: 6/30/2015

GMT: ED LECIUS

LOCATION CONNECTICUT

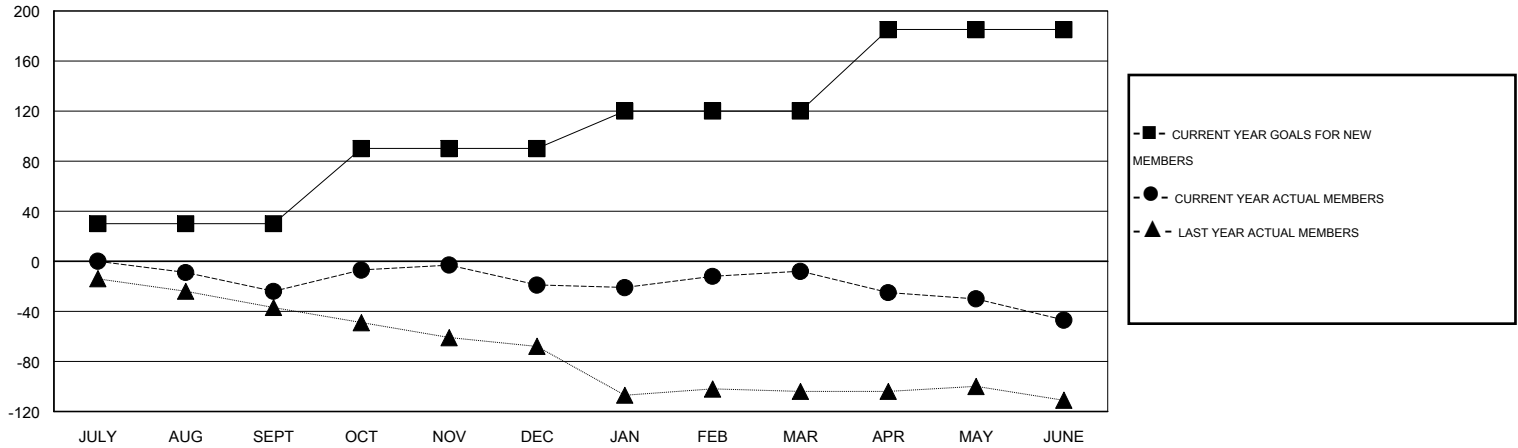
GMT CA 1

Clubs					Members				
RESULTS FOR 2014-2015					RESULTS FOR 2014-2015				
QUARTER	NEW CLUB GOAL	NEW CLUBS	DROPPED CLUBS	NET GAIN/LOSS	QUARTER	NEW MEMBER GOAL	CHARTER AND NEW MEMBERS ADDED	DROPPED MEMBERS	NET GAIN/LOSS
JULY/AUG/SEPT	0	0	0	0	JULY/AUG/SEPT	30	24	48	-24
OCT/NOV/DEC	1	0	1	-1	OCT/NOV/DEC	60	61	56	5
JAN/FEB/MAR	0	0	0	0	JAN/FEB/MAR	30	38	27	11
APR/MAY/JUNE	1	0	0	0	APR/MAY/JUNE	65	21	60	-39

GOALS AND ACTUAL NEW CLUBS CUMULATIVE



GOALS AND ACTUAL MEMBERS CUMULATIVE



DROPPED CLUBS: 1	41 CLUBS OF 53 ADDED 1 OR MORE NEW MEMBERS	<u>GENDER DISTRIBUTION</u>	
		MALE	1,155 (66.27%)
		FEMALE	588 (33.73%)
<u>DROPPED MEMBERS</u>		<u>FAMILY UNIT MEMBERS</u> 318	
DECEASED	24	<u>HEAD OF HOUSEHOLD</u> 154	
CLUB CANCELLED	0	<u>NON-HEAD OF HOUSEHOLD</u> 164	
OTHER	167		
TOTAL	191		

[CLICK HERE FOR HEALTH ASSESSMENT DATA](#)